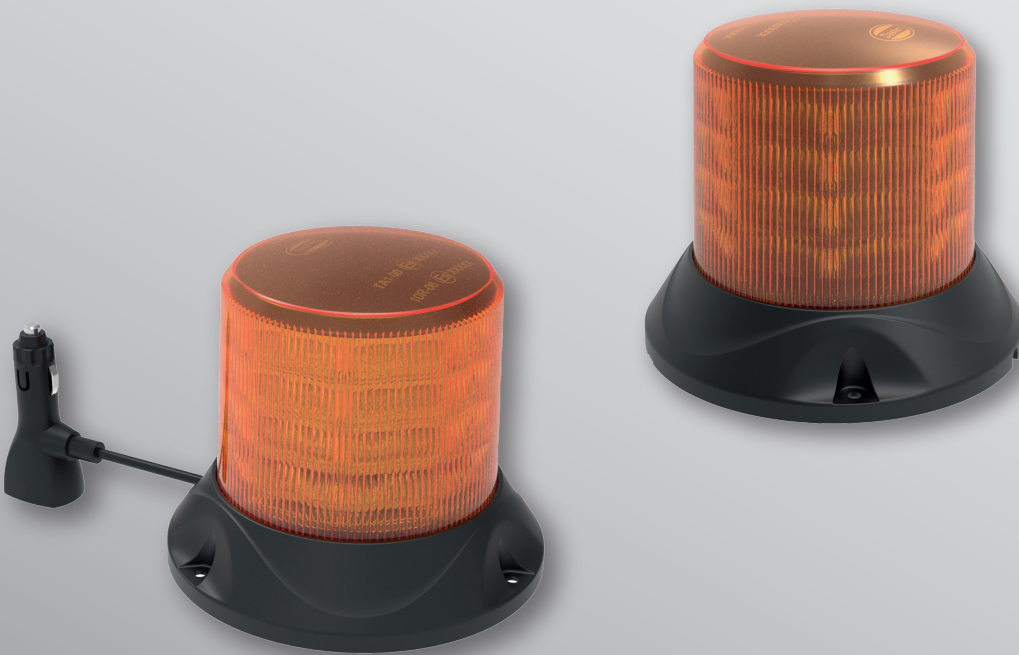




DSL-W500L SERIES

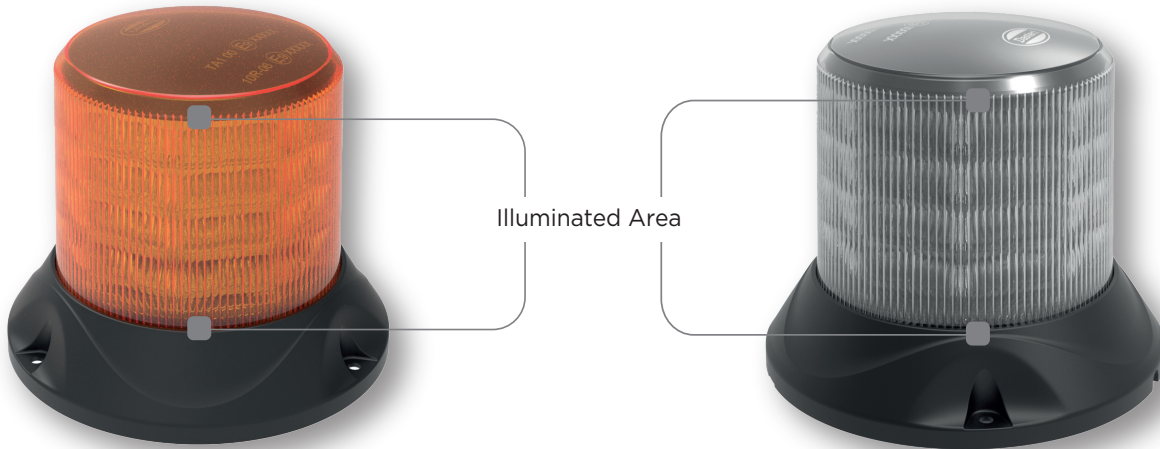
LED BEACON LAMP



PRODUCT BENEFITS

- Designed for excellent Light Performance with more illuminated lens area
- Rotating and Flashing Light Patterns
- Available in Amber, Red, Blue, emitted light
- Two alternative Mounting Concepts (Flat, Magnetic)
- IP67 Protection
- Multi-voltage 10-30V

FUNCTIONS LAYOUT

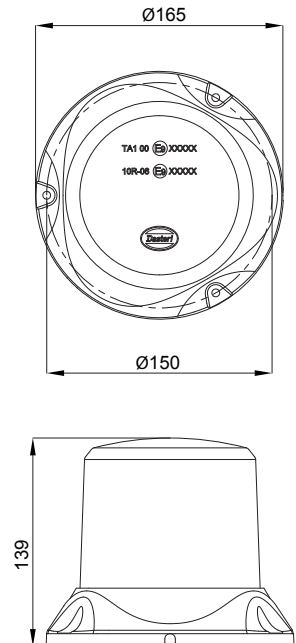


TECHNICAL SPECIFICATIONS

TECHNICAL DATA

Variants	Series DSL-W500L.05	Series DSL-W500L.06	Series DSL-W500L.08	
Operating Voltage	10 V - 30 V			
Reverse Polarity Protection	Yes			
Light Function	LED Warning Light			
Emitted Color	Amber	Red	Blue	
Consumption	27 W	18 W	24 W	
Temperature Range	- 40°C to + 65°C			
Type of Mounting	Series DSL-W500L	Screw Mounting		
	Series DSL-W500LM	Magnetic Base		
Material	Lens	PC (Amber)	PC (Transparent)	PC (Transparent)
	Housing	PC		
Type of Protection	IP67			
Approvals	ECE	R65	R65	R65
		TA1	TR1	TB1
		00	00	00
	SAE	J845 - Class 1		
	EMC	R10-06		
CISPR 25	Class 3			
Flashing Patterns	10			
Type of Connection	Series DSL-W500L	500mm Cable		
	Series DSL-W500LM	2500mm Cable + Cigarette Plug		

DIMENSIONAL DRAWING



CODES OVERVIEW

Variants Ref. No.	Screw Mounting	Magnetic Mounting	Amber	Red	Blue
DSL-W500L.05	•		•		
DSL-W500L.06	•			•	
DSL-W500L.08	•				•
DSL-W500LM.05		•	•		
DSL-W500LM.06		•		•	
DSL-W500LM.08		•			•